



Nantucket Memorial Airport
14 Airport Road
Nantucket Island, Massachusetts 02554

NOISE ABATEMENT LETTER TO AIRMEN NO. 2005-1

Subject: Voluntary Noise Abatement Arrival and Departure Procedures

Effective: 1 JULY 2005

Replaces: Noise Abatement Letter to Airmen No. 2000-1

Nantucket is a noise sensitive area.

The Nantucket Airport Commission conducted a FAR Part 150 Noise Abatement and Land Use Compatibility Study with the support of the FAA. The procedures described in this letter were developed as part of the study, are updated annually, and are being used to reduce the impact of airport operations on the Island of Nantucket.

Please do your best to support this effort.

Alfred G. Peterson
Airport Manager



Nantucket Memorial Airport



VOLUNTARY PROCEDURES

(for various runway configurations)

Nantucket ATIS Frequency 127.5

Additional details available at: www.NantucketAirport.com/noise.htm

Landing runway 24 / 30 - Departing runway 24

Arrive 24 using **3rd Point** for right base to runway 24, unless tower assigns alternate route.
Arrive 30 using offshore route around **eastern side** of Island (*1 mile offshore*) for **right base** to runway 30.

Single Engine aircraft expect routing from **Water Tower** at 2000' altitude for **right downwind** to runway 30.

Depart using offshore route (*1 mile offshore*) to **Smith's Point**, avoid overflying Island.

Landing runway 24 - Departing runway 15

Arrive using **3rd Point** for **right base** to runway 24, unless tower assigns alternate route.
Depart left traffic overwater around **eastern side** of Island (*1 mile offshore*).

Landing runway 06 / 33 - Departing runway 06

Arrive 06 overwater via **Smith's Point** (*1 mile offshore*) for **left base** to runway 06.
Arrive 33 using offshore route around **eastern side** of Island (*1 mile offshore*) for **right base** to runway 33.

Depart 06 over **Folger's Marsh** and **3rd Point**.

Landing runway 06 - Departing runway 15

Arrive overwater via **Smith's Point** (*1 mile offshore*) for **left base** to runway 06.
Depart left traffic overwater around **eastern side** of Island (*1 mile offshore*).

Landing runway 33 - Departing runway 24

Arrive using offshore route around **eastern side** of Island (*1 mile offshore*) for **right base** to runway 33.

Depart using offshore route (*1 mile offshore*) to **Smith's Point**, avoid overflying Island.

Landing runway 33 - Departing runway 06

Arrive using offshore route around **eastern side** of Island (*1 mile offshore*) for **right base** to runway 33.

Depart over **Folger's Marsh** and **3rd Point**.

Landing runway 33 - Departing runway 33

Arrive over **3rd Point** for **right downwind** or overwater around **Smith's Point** (*1 mile offshore*) for **left base**.

Depart over **1st Point**.

GENERAL AVIATION / AIRLINE CORRIDORS

Voluntary Compliance During VFR Conditions



CAPE APPROACH

126.1

VFR ADVISORY CODES

NOTE: RADIALS & DME

FROM ACK VOR

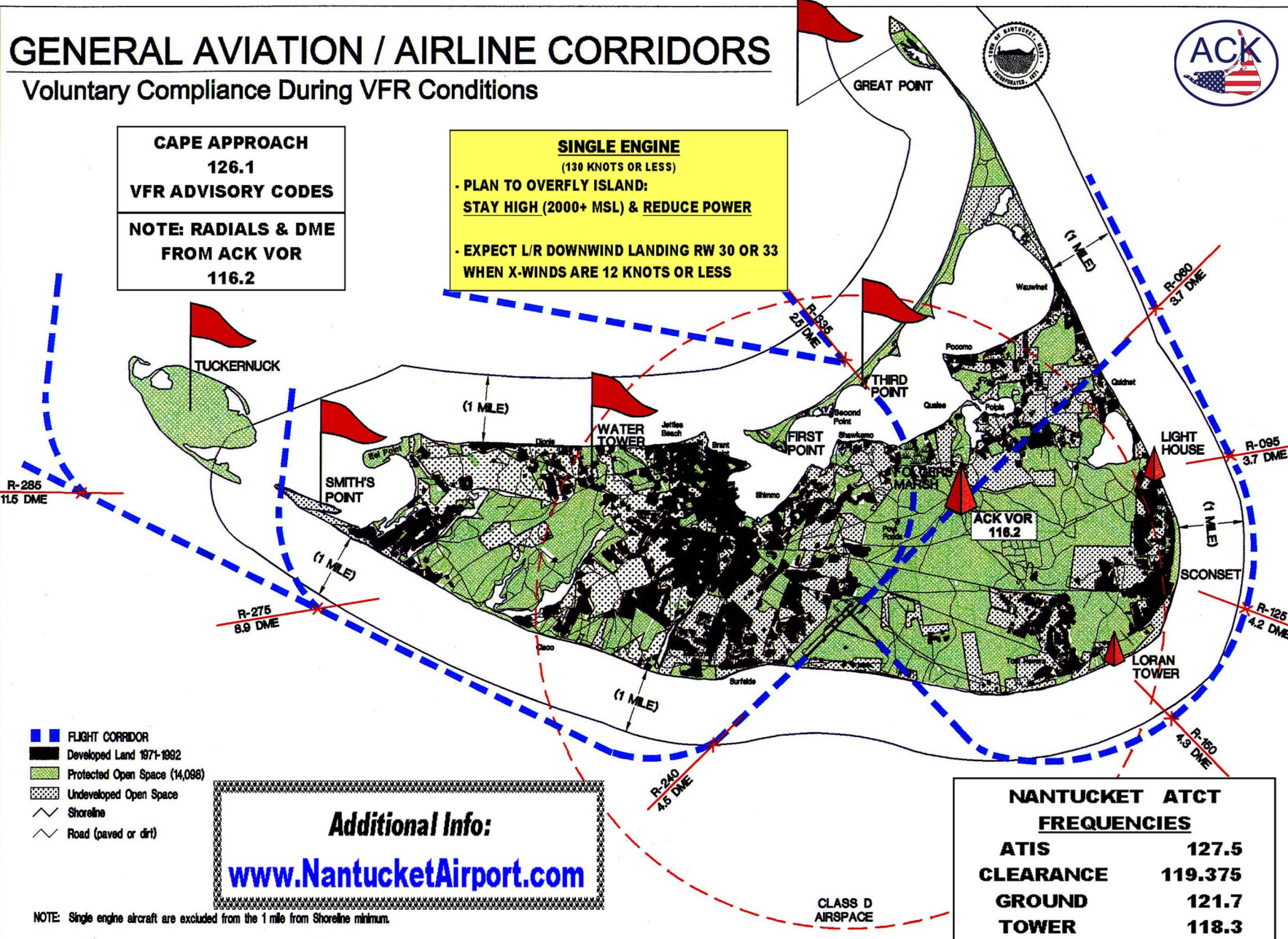
116.2

SINGLE ENGINE

(130 KNOTS OR LESS)

- PLAN TO OVERFLY ISLAND:
STAY HIGH (2000+ MSL) & REDUCE POWER

- EXPECT L/R DOWNWIND LANDING RW 30 OR 33
WHEN X-WINDS ARE 12 KNOTS OR LESS



R-285
11.5 DME

R-275
8.9 DME

R-240
4.5 DME

R-335
2.5 DME

R-080
3.7 DME

R-095
3.7 DME

R-125
4.2 DME

R-160
4.3 DME

- FLIGHT CORRIDOR
- Developed Land 1971-1992
- Protected Open Space (14,088)
- Undeveloped Open Space
- Shoreline
- Road (paved or dirt)

Additional Info:
www.NantucketAirport.com

NANTUCKET ATCT FREQUENCIES	
ATIS	127.5
CLEARANCE	119.375
GROUND	121.7
TOWER	118.3

CLASS D
AIRSPACE

NOTE: Single engine aircraft are excluded from the 1 mile from Shoreline minimum.