



NANTUCKET MEMORIAL AIRPORT

- yearly enplanement summary -
[Revenue Passengers Departing Nantucket]

ENPLANEMENTS

December 2008

In the year 2000, annual airport operations, as reported by the Tower, reached a high of 170,367. Four years of declining traffic followed the softening economy in the aftermath of 9/11. In 2006 the operations had recovered to a total of 161,685. 2007 operations were off 7.1% from 2006.

Air taxi operations by Cessna 402 operators Cape Air, Island Airlines and Nantucket Airlines reached a peak of 88,882 annual operations in 2000. After a 25% post 9/11 decline, operations for 2004, 2005 and 2006 showed a return to positive growth year over year.

Enplanements (number of passengers departing NMA) reached a peak of 302,161 passengers in the year 2000. In 2006 enplanements totalled 269,433.

2004 enplanements increased 5.97% over 2003. 2005 enplanements increased 2.48% over 2004. 2006 enplanements increased 8.21% over 2005. **2007 enplanements increased 3.23% over 2006. Enplanements for 2008 finished 7.3% below 2007.**

Jack F. Wheeler
Environmental Coordinator



NANTUCKET MEMORIAL AIRPORT

- yearly enplanement summary -
 [Revenue Passengers Departing Nantucket]

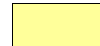
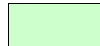
<i>Year</i>	<i>Comment</i>	<i>Enplanements</i>	<i>% Change Base Year</i>	<i>% Change Prior Year</i>
1976		43,807	(50.68)	
1977		51,954	(53.84)	18.60
1978		60,816	(58.28)	17.06
1979		63,245	(61.86)	3.99
1980		71,838	(60.99)	13.59
1981	FAA Controllers' Strike	88,820	(47.91)	23.64
1982		112,558	(33.99)	26.73
1983		145,784	(14.51)	29.52
1984		165,809	(2.77)	13.74
1985		184,148	7.99	11.06
1986		170,524	0.00	(7.40)
1987		140,388	(17.67)	(17.67)
1988	PBA Changeover; Poor Service	134,537	(21.10)	(4.17)
1989		125,169	(26.60)	(6.96)
1990		128,343	(24.74)	2.54
1991		134,482	(21.14)	4.78
1992		155,222	(8.97)	15.42
1993		179,451	5.24	15.61
1994		200,474	17.56	11.72
1995		219,563	28.76	9.52
1996		217,170	27.35	(1.09)
1997	Tower Upgraded to Level II	253,985	48.94	16.95
1998		277,030	62.46	9.07
1999		299,490	75.63	8.11
2000		302,161	77.20	0.89
2001		276,924	62.40	(8.35)
2002		257,997	51.30	(6.83)
2003		229,301	34.47	(11.12)
2004		242,975	42.49	5.96
2005		249,002	46.02	2.48
2006		269,433	58.00	8.21
2007		278,133	63.10	3.23
2008	..Updated December 31, 2008..	257,755	51.15	(7.33)

NANTUCKET MEMORIAL AIRPORT

- 2008 monthly enplanements -

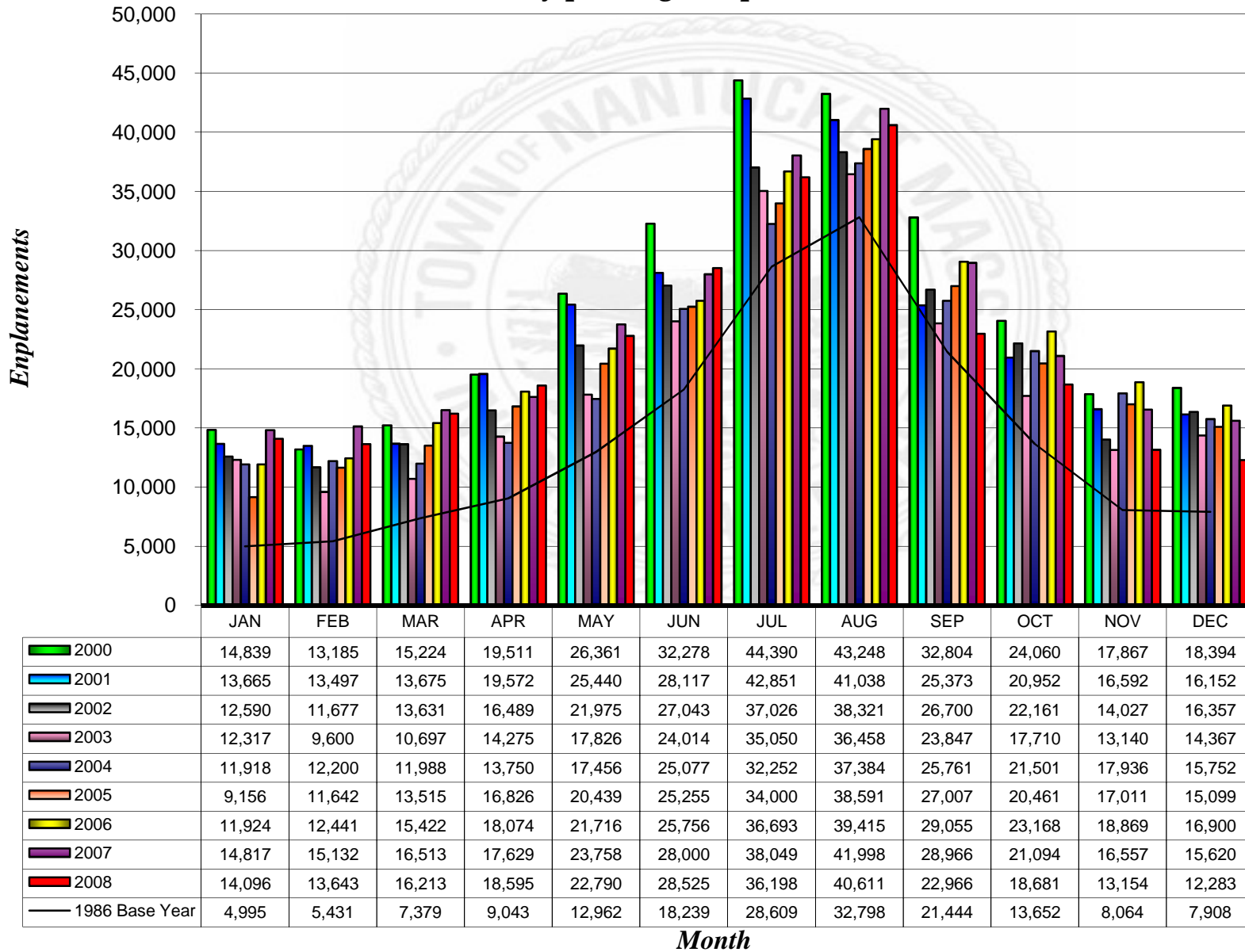
AIRLINE	JAN	FEB	MAR	APR	MAY	JUN	JUL	AUG	SEP	OCT	NOV	DEC	TOTAL
Cape Air (<i>KAP</i>)	1420	1421	1611	2364	4158	6242	8914	10125	7033	4284	1895	1750	51,217
Colgan (<i>USAirways - CJC</i>)	83	18	0	40	414	665	1639	2479	1194	127			6,659
Continental Express (<i>BTA</i>)						1050	2275	2584	266				6,175
Delta Express (<i>Freedom Air</i>)						1386							1,386
Delta Express (<i>Com Air</i>)							1967	2243	98				4,308
Island Air (<i>ISA</i>)	5385	5075	5814	6200	7171	7436	8099	8336	6452	6527	4908	4665	76,068
JetBlue Airways					386	1133	2047	2856	58				6,480
Nantucket Air (<i>ACK</i>)	4308	4242	5217	6511	6873	6500	6244	6883	4751	4919	3612	3412	63,472
Nantucket Shuttle	2884	2877	3563	3437	3556	3647	3416	3094	2551	2688	2691	2411	36,815
Tradewind Aviation	16	10	8	43	232	370	730	761	397	136	48	45	2,796
USAirways (<i>Air Wisconsin - AW</i>)						96	867	1250	166				2,379
Monthly Total	14,096	13,643	16,213	18,595	22,790	28,525	36,198	40,611	22,966	18,681	13,154	12,283	257,755
% Change Prior Year	(4.87)	(9.84)	(1.82)	5.48	(4.07)	1.88	(4.86)	(3.30)	(20.71)	(11.44)	(20.55)	(21.36)	(7.33)
12 Month Running Total	277,412	275,923	275,623	276,589	275,621	276,146	274,295	272,908	266,908	264,495	261,092	257,755	

Color Code Key:



NANTUCKET MEMORIAL AIRPORT

- monthly passenger enplanements -



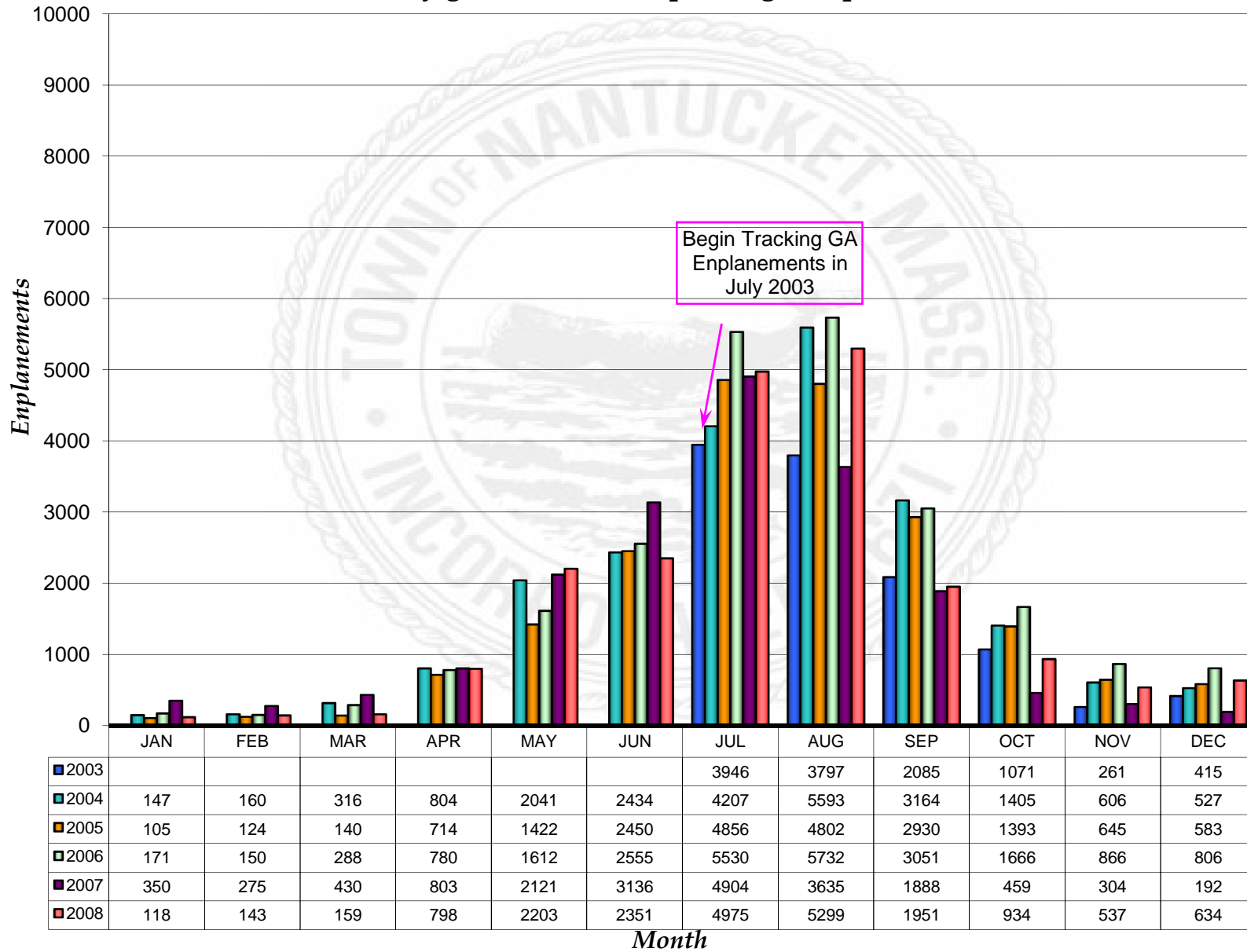
NANTUCKET MEMORIAL AIRPORT

- running 12 month total passenger enplanements -



NANTUCKET MEMORIAL AIRPORT

- monthly general aviation passenger enplanements -



Annual Totals	
2003	11,575
2004	21,404
2005	20,164
2006	23,207
2007	18,497
2008	20,102